

PASSWORD "SECRETS"

MARCH 3, 2006

U1BNOzEAUL IFAY1OTSgBAGtkZS1pMThuL010YwXpYw4tMy4wLjAtNS5ub2FyY2guenBtUFgkDktFRE1UXzNfLLJQTTxaxAFJSBQJTk0baQBrZWRpdC0zLjAuMC00LmkzODYuonBtUFgkAaSB
AAEOS0VSTkUwmdIuU1BNOzEAUL IFAY1OTROBAGtlcm5lbC0yLjQuMtGtMy5pMzgz2LnJwbVBYAAABAAAABDktFuk5FTT9CLLJQTTxaxAFJSBQJTk0kaQBrZXJuZwWtYmlnbVWtLTIuNC4x0C0z
TkVVK1AuU1BNOzEAUL IFAY1OTSgBAGtlcm5lbC1wY21jAwEtY3MCMY4xLjI3L4TE4LmkzYuU1BNOzEAUL IFAY1OTSMBAGtlcm5lbC1zbXAtMi40LjE4LTmuYKRobG9uLnJwbVBYJAGkgQAASU
5QVVQyXy5SUE07MQBSUGUBiUSNjgEaa2lucHV0Mi1jYw5uYs13bm42LXzAABURhoBDMYEEQOCJvBmBhEOLw7wZgYQETod8I4AmaECAAACoZ1ObwYAAAZvTmJUBwfvAvAJcmIqAAABDktPTJ
fMF8zLLJQTTxaxVicki.StoverM8rb24yLTAuMy45Yi03LmkzODYuonBtMQBSUGUBiUSNIEAAa29uMi1mb250cy0wLjQuOWITny5pMzgz2LnJwbVBYJAGkgQAAAACBpBUAAAEOS090VFTF8
uU1BNOzEAUL IFAY1OTSMBAGtvbnRyb2wtocGFuZWwtNC4yLjMTMi5pMzgz2DktTfWU1PT1BTLJQTTxaxAFJSBQJTk0aQBrZWRpdC0zLjAuMC00LmkzODYuonBtUFgkAaSB
uU1BNOzEAUL IFAY1OTROBAGtlZhp1LTAuOTkuNTItMS5pMzgz2LnJwbVBYSUJHTDAwMC5SUE07MQBSUGUBiUSNIAEAbG1I2ZxhZGUyLjTEuOTkuOS0yLmkzODYuonBtUFgkSUJHTEFERS5SUE0
7MQBSUGUBiUSNHQEAAbG1I2ZxhZGUtMC4xNy01LmkzODYuonBtUFgkAaAAVEYaaAQ5mBEEAJTzWgYRDjUp8GYGEBE60/AAjgAeqwIAAAKRoOGAGAAAGaAZgOPACYAABURhoBDMYEEQANCPB
mBhEOKHwZgYQEGgo8JAAaqsCAAACq547Bfluf fyQEAEEFO2YEEQANdfkxJQk9MRTJfLLJQTTxaxAFJSBQJTk0dAQBSaWJvbGUYLTauMi40LTeuaTM4Ni5y0G1QWCABURhoBDMYEEQANCPB
S/wZgYQETsB8JAAU0CAAAACrVFPuAAAAC7Ryan.MattesonPkkJQ1JTVkdfLLJQTTxaxAFJSBQJTk0dAQBSaWJybGUYLTauMi40LTeuaTM4Ni5y0G1QWCABURhoBDMYEEQANCPB
YnRvb2wtbG1Icy0xLjQuMi03LmkzODYuonBtUF01GLLJQTTxaxAFJSBQJTk0fAQBSaWJlbnMpdZi00LjEuMC0xMC5pMzgz2LnJwbVBYJAGkgQAADkxJQ1ZPukJLLJQTTxaxAFJSBQJTk0gAQBS
saWJ2b3JiaX0tMS4wcmMzLTEuaTM4Ni5y0GABURhoBDMYEEQANCPBmBhEOKiHwZgYQETsN8JIAmLACAAACsJh0IgQAAAQ1dGYEEQAOCvAAAQJ1hTTFRfLLJQTTxaxAFJSBQJTk0eAQBSaWJ4
c2x0LTeuMC4xNS0xLmkzODkxPR1JPVEFULJQTTxaxAFJSBQJTk0fAQDan.MalonedGUTMy42LjQTM55pMzgz2LnJwbVBYAEOTFBSTkdfm18uU1BNOzEAUL IFAY1OTRBAEaxQUm5nLTmuOC45
LTmu4TM4Ni5y0G1QWCABURhoBDMYEEQANCPBmBhEOKiHwZgYRChwg8JAAkrQCAAACtJLnwAXcead52UJbWxIvAAADk1BSUXYXzhfLLJQTTxaxAFJSBQJTk0cAQBTYw1seC04LjEuMS0yMi
5pMzgz2LNAEOTUFOXzFfnUouU1BNOzEAUL IFAY1OTRgBAG1hbi0xLjVgLTyuaTM4Ni5y0G1QWCQBP IEAiUSNJwEABWfULXBhZ2VzLWtvLTIwMDEwMzIxLTIubm9hcmNoLnJwbVBYJAGkgQXfc
eCBpCAEOTUFOX1AwMDMuU1BNOzEAUL IFAY1OTSIBAG1hbi1wYwdIcy1kzS0wLjQTM55ub2FyYTerri.BrunsiU1BNOzEAUL IFAY1OTRBAEaxQUm5nLTmuOC45
gQk1LQk9FVERJLLJQTTxaxAFJSBQJTk0gAQBSa2Jvb3RkaXNrLTEuNC4zLTEuaTM4Ni5y0G1Q5NS5SUE07MQBSUGUBiUSNHgEAbWt4YXV0aC0xLjctMTgubm9hcmNoLnJwbVBYJAGkgQXfc
Btb2R1dG1cy0yLjQuMtGtMy5pMzgz2LnJwbVBYJAGkgQAAAACBpAcAkkJQ1JTVkdfLLJQTTxaxAFJSBQJTk0dAQBSaWJybGUYLTauMi40LTeuaTM4Ni5y0G1QWCABURhoBDMYEEQANCPB
YnRvb2wtbG1Icy0xLjQuMi03LmkzODYuonBtUF01GLLJQTTxaxAFJSBQJTk0fAQBSaWJlbnMpdZi00LjEuMC0xMC5pMzgz2LnJwbVBYJAGkgQAADkxJQ1ZPukJLLJQTTxaxAFJSBQJTk0gAQBS
saWJ2b3JiaX0tMS4wcmMzLTEuaTM4Ni5y0GABURhoBDMYEEQANCPBmBhEOKiHwZgYQETsN8JIAmLACAAACsJh0IgQAAAQ1dGYEEQAOCvAAAQJ1hTTFRfLLJQTTxaxAFJSBQJTk0eAQBSaWJ4
c2x0LTeuMC4xNS0xLmkzODkxPR1JPVEFULJQTTxaxAFJSBQJTk0fAQBSa2DyB3RhdGUTMy42LjQTM55pMzgz2LnJwbVBYAEOTFBSTkdfm18uU1BNOzEAUL IFAY1OTRBAEaxQUm5nLTmuOC45
LTmu4TM4Ni5y0G1QWCABURhoBDMYEEQANCPBmBhEOKiHwZgYRChwg8JAAkrQCAAACtJLnwAXcead52UJbWxIvAAADk1BSUXYXzhfLLJQTTxaxAFJSBQJTk0cAQBTYw1seC04LjEuMS0yMi
5pMzgz2LNAEOTUFOXzFfnUouU1BNOzEAUL IFAY1OTRgBAG1hbi0xLjVgLTyuaTM4Ni5y0G1QWCQBP IEAiUSNJwEABWfULXBhZ2VzLWtvLTIwMDEwMzIxLTIubm9hcmNoLnJwbVBYJAGkgQXfc
eCBpCAEOTUFOX1AwMDMuU1BNOzEAUL IFAY1OTSIBAG1hbi1wYwdIcy1kzS0wLjQTM55ub2FyYTerri.BrunsiU1BNOzEAUL IFAY1OTRBAEaxQUm5nLTmuOC45
YnRvb2wtbG1Icy0xLjQuMi03LmkzODYuonBtUF01GLLJQTTxaxAFJSBQJTk0fAQBSaWJlbnMpdZi00LjEuMC0xMC5pMzgz2LnJwbVBYJAGkgQAADkxJQ1ZPukJLLJQTTxaxAFJSBQJTk0gAQBS
saWJ2b3JiaX0tMS4wcmMzLTEuaTM4Ni5y0GABURhoBDMYEEQANCPBmBhEOKiHwZgYQETsN8JIAmLACAAACsJh0IgQAAAQ1dGYEEQAOCvAAAQJ1hTTFRfLLJQTTxaxAFJSBQJTk0eAQBSaWJ4
c2x0LTeuMC4xNS0xLmkzODkxPR1JPVEFULJQTTxaxAFJSBQJTk0fAQBSa2DyB3RhdGUTMy42LjQTM55pMzgz2LnJwbVBYAEOTFBSTkdfm18uU1BNOzEAUL IFAY1OTRBAEaxQUm5nLTmuOC45
LTmu4TM4Ni5y0G1QWCABURhoBDMYEEQANCPBmBhEOKiHwZgYRChwg8JAAkrQCAAACtJLnwAXcead52UJbWxIvAAADk1BSUXYXzhfLLJQTTxaxAFJSBQJTk0cAQBTYw1seC04LjEuMS0yMi
5pMzgz2LNAEOTUFOXzFfnUouU1BNOzEAUL IFAY1OTRgBAG1hbi0xLjVgLTyuaTM4Ni5y0G1QWCQBP IEAiUSNJwEABWfULXBhZ2VzLWtvLTIwMDEwMzIxLTIubm9hcmNoLnJwbVBYJAGkgQXfc
eCBpCAEOTUFOX1AwMDMuU1BNOzEAUL IFAY1OTSIBAG1hbi1wYwdIcy1kzS0wLjQTM55ub2FyYTerri.BrunsiU1BNOzEAUL IFAY1OTRBAEaxQUm5nLTmuOC45
YnRvb2wtbG1Icy0xLjQuMi03LmkzODYuonBtUF01GLLJQTTxaxAFJSBQJTk0fAQBSaWJlbnMpdZi00LjEuMC0xMC5pMzgz2LnJwbVBYJAGkgQAADkxJQ1ZPukJLLJQTTxaxAFJSBQJTk0gAQBS
saWJ2b3JiaX0tMS4wcmMzLTEuaTM4Ni5y0GABURhoBDMYEEQANCPBmBhEOKiHwZgYQETsN8JIAmLACAAACsJh0IgQAAAQ1dGYEEQAOCvAAAQJ1hTTFRfLLJQTTxaxAFJSBQJTk0eAQBSaWJ4
c2x0LTeuMC4xNS0xLmkzODkxPR1JPVEFULJQTTxaxAFJSBQJTk0fAQBSa2DyB3RhdGUTMy42LjQTM55pMzgz2LnJwbVBYAEOTFBSTkdfm18uU1BNOzEAUL IFAY1OTRBAEaxQUm5nLTmuOC45
LTmu4TM4Ni5y0G1QWCABURhoBDMYEEQANCPBmBhEOKiHwZgYRChwg8JAAkrQCAAACtJLnwAXcead52UJbWxIvAAADk1BSUXYXzhfLLJQTTxaxAFJSBQJTk0cAQBTYw1seC04LjEuMS0yMi
5pMzgz2LNAEOTUFOXzFfnUouU1BNOzEAUL IFAY1OTRgBAG1hbi0xLjVgLTyuaTM4Ni5y0G1QWCQBP IEAiUSNJwEABWfULXBhZ2VzLWtvLTIwMDEwMzIxLTIubm9hcmNoLnJwbVBYJAGkgQXfc
eCBpCAEOTUFOX1AwMDMuU1BNOzEAUL IFAY1OTSIBAG1hbi1wYwdIcy1kzS0wLjQTM55ub2FyYTerri.BrunsiU1BNOzEAUL IFAY1OTRBAEaxQUm5nLTmuOC45
YnRvb2wtbG1Icy0xLjQuMi03LmkzODYuonBtUF01GLLJQTTxaxAFJSBQJTk0fAQBSaWJlbnMpdZi00LjEuMC0xMC5pMzgz2LnJwbVBYJAGkgQAADkxJQ1ZPukJLLJQTTxaxAFJSBQJTk0gAQBS
saWJ2b3JiaX0tMS4wcmMzLTEuaTM4Ni5y0GABURhoBDMYEEQANCPBmBhEOKiHwZgYQETsN8JIAmLACAAACsJh0IgQAAAQ1dGYEEQAOCvAAAQJ1hTTFRfLLJQTTxaxAFJSBQJTk0eAQBSaWJ4
c2x0LTeuMC4xNS0xLmkzODkxPR1JPVEFULJQTTxaxAFJSBQJTk0fAQBSa2DyB3RhdGUTMy42LjQTM55pMzgz2LnJwbVBYAEOTFBSTkdfm18uU1BNOzEAUL IFAY1OTRBAEaxQUm5nLTmuOC45
LTmu4TM4Ni5y0G1QWCABURhoBDMYEEQANCPBmBhEOKiHwZgYRChwg8JAAkrQCAAACtJLnwAXcead52UJbWxIvAAADk1BSUXYXzhfLLJQTTxaxAFJSBQJTk0cAQBTYw1seC04LjEuMS0yMi



Overview

Ryan:

- What/why/how of your Cal Poly Password

Dan:

- Changes that will affect all of us

Terri:

- How the ITS Service Desk can help you



THE CALIFORNIA STATE UNIVERSITY

BAKERSFIELD • CHANNEL ISLANDS • CHICO • DOMINGUEZ HILLS • FRESNO • FULLERTON • HAYWARD • HUMBOLDT
LONG BEACH • LOS ANGELES • MARITIME ACADEMY • MONTEREY BAY • NORTHBRIDGE • POMONA • SACRAMENTO
SAN BERNARDINO • SAN DIEGO • SAN FRANCISCO • SAN JOSE • SAN LUIS OBISPO • SAN MARCOS • SONOMA • STANISLAUS

OFFICE OF THE
UNIVERSITY AUDITOR

July 21, 2004

I am writing to inform you that a hard drive from a laptop computer belonging to the California State University systemwide Office of the University Auditor was either inadvertently discarded or stolen sometime over the weekend of June 26-27, 2004. This hard drive contained personal information, including your name and Social Security Number. While there is no indication that your private information was accessed for the purposes of identity theft, we are sending this notification to you as required by California Civil Code 1798.29, commonly referred to as SB 1386. Please accept our sincere apologies. This is a very serious issue for us, and we know that it is a very serious concern for you.

“This hard drive contained personal information, including your name and Social Security Number ...

...This is a very serious issue for us, and we know that it is a very serious concern for you.”

March 3, 2006

CAL POLY

Information Technology Services

Sutton's Law

“...because **that's where the money is.**”

- hacking
- spyware
- viruses
- worms



- ID theft
- fraud
- use of resources*

What we need is...

...easy access to Cal Poly information and resources for those who **should** have it

...extremely difficult for those who **shouldn't** have it

The Cal Poly Password helps meet these needs for campus services.

Individually, needs are simple.

Together, they pose a challenge.

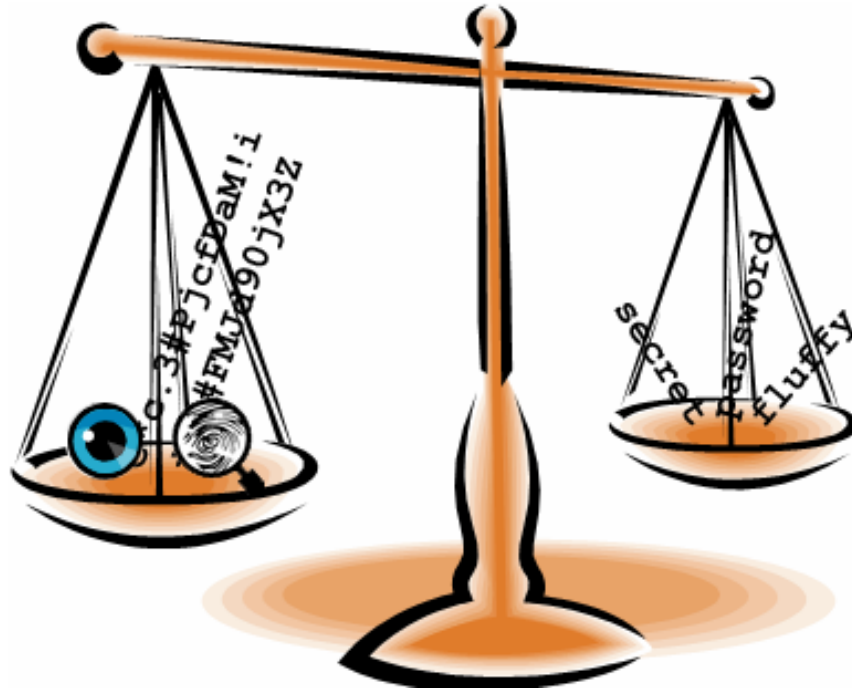
Balancing The Needs

Unrealistic Extremes:

- easiest access = no password
(like no locks on your door)

- strongest protection =
long/random password + token +
retina scan + etc. (like living in a
bank vault)

Balancing The Needs



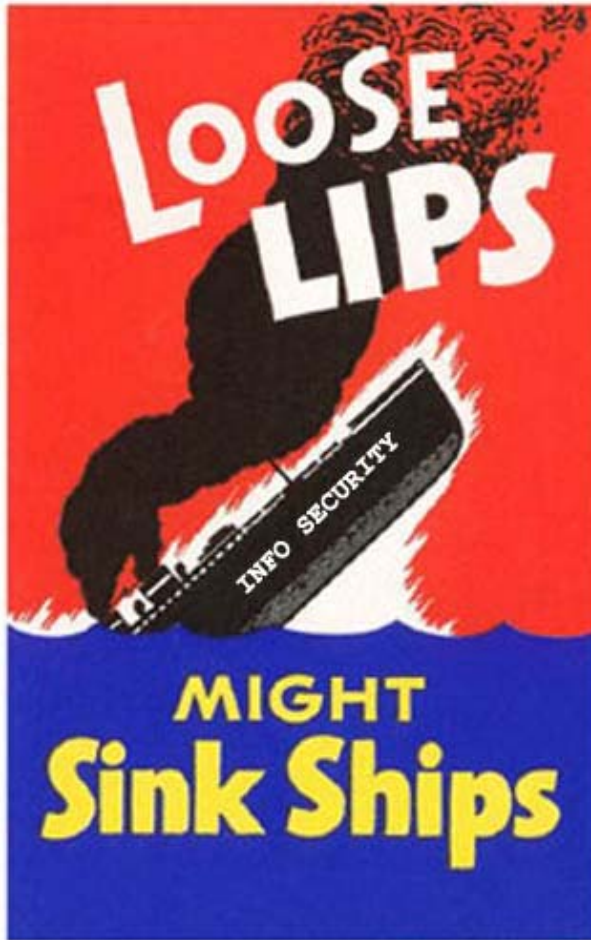
- The world is our neighborhood.
- Real solutions require tradeoffs based on perceived risk: **password guessing**

The Balance Today

- One password, many services
- Strict password rules
- No retina scan or fingerprint required!
- Passwords usable indefinitely

Next: Dan and changes to *stay* balanced.

A hard to guess password can still be weak...



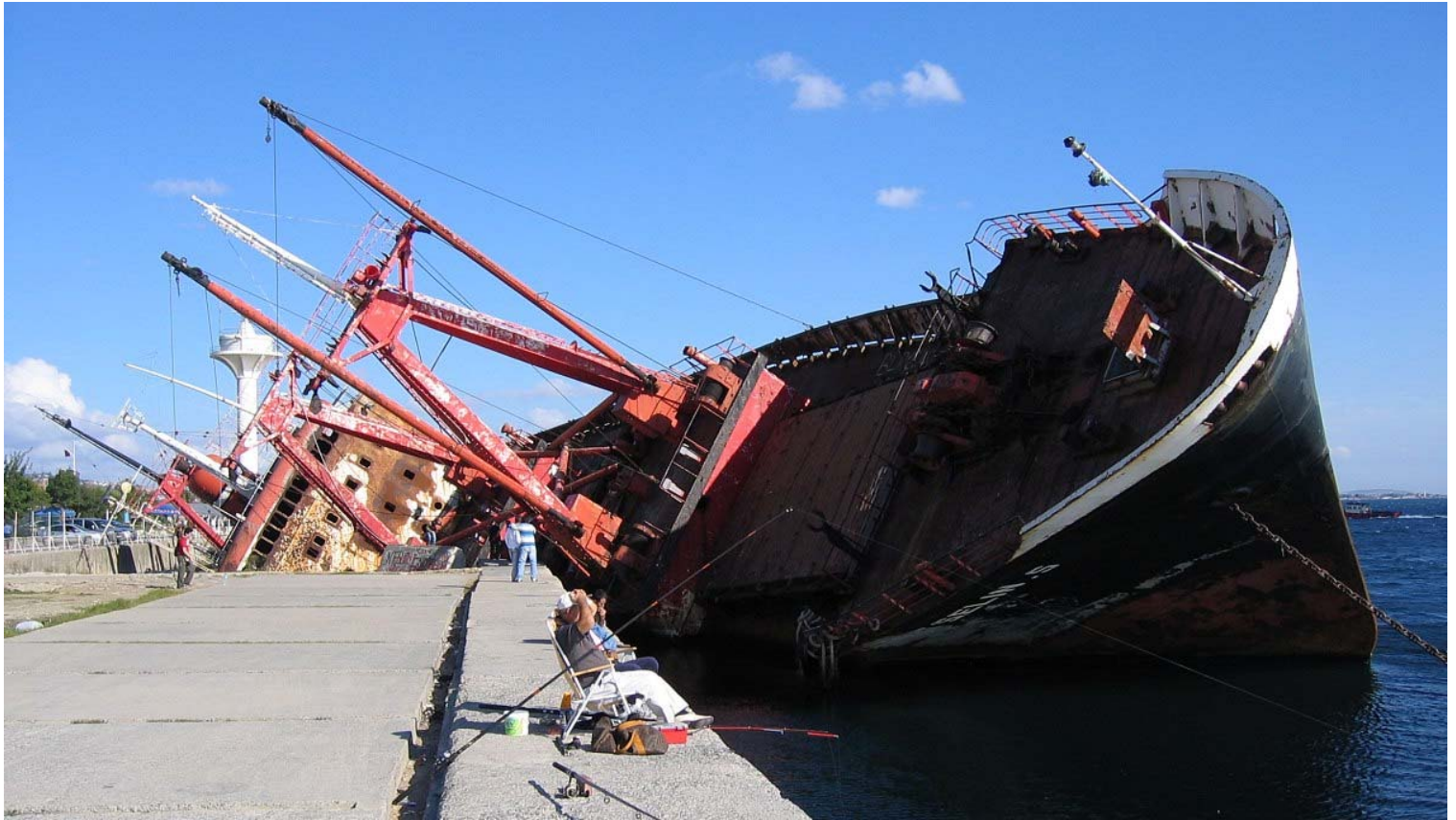
(Just because it's
propaganda
doesn't mean it's
not true!)

Changes to Maintain Balance

- Password Expiration
 - new password must be set yearly
 - plenty of advance notice
- Acknowledge Policies
 - those forms you don't remember signing
- Later: changes to password rules, process
 - we hope to make your life a little easier

If talk of changing passwords gives *you* a sinking feeling....

(to further muddy the metaphor)



March 3, 2006

(CC) Photo by Alistair Howard

11

The Service Desk can help

ITS Service Desk

Phone: extension 67000



<http://servicedesk.calpoly.edu/>

Navigate to

Accounts and Passwords

Contact

- <http://security.calpoly.edu/>
- <http://servicedesk.calpoly.edu/>

Vicki Stover

vstover@calpoly.edu

Ryan Matteson

rmatteso@calpoly.edu

Dan Malone

dmalone@calpoly.edu

Terri Bruns

tbruns@calpoly.edu

Questions

